

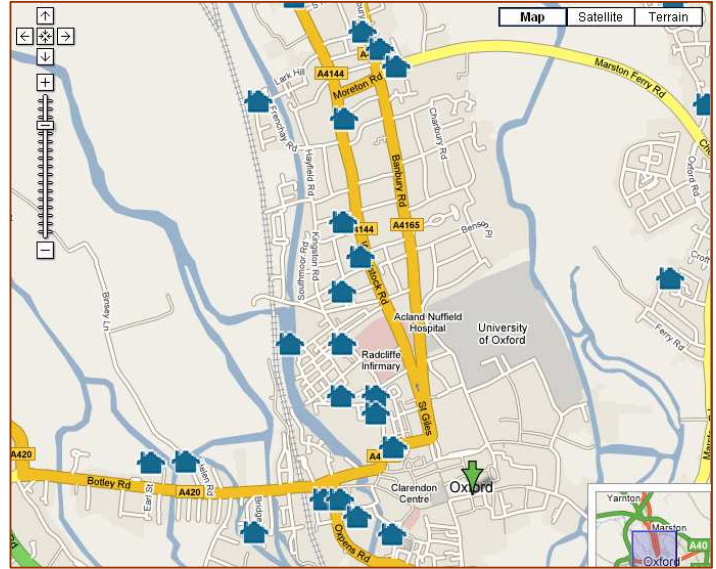
# Custom Online Maps

## With Google Maps ([maps.google.com](http://maps.google.com))

Interactive online maps allow you to **annotate a map or Aerial photo** of your local area.

You might use this to **shared your photos of the local area, provide local information or find out what people think** of facilities and activities available in the area.

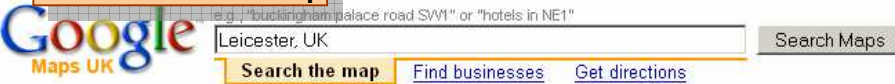
You can **share your customized map** on the web or through a **3D mapping program**.



### Getting Started

Visit <http://maps.google.com> and select 'My Maps'. Follow the instructions below to sign in and get started

#### 1) Select My Maps and create a new map



#### 6) Open your map in 3D using Google Earth

View in Google Earth Print Send Link to this page

#### 3) Use the drawing tools to annotate the map. You can include rich text and even embed photos and videos.



#### Manage collaborators

Advanced Permissions  
 Only the owner may change these settings

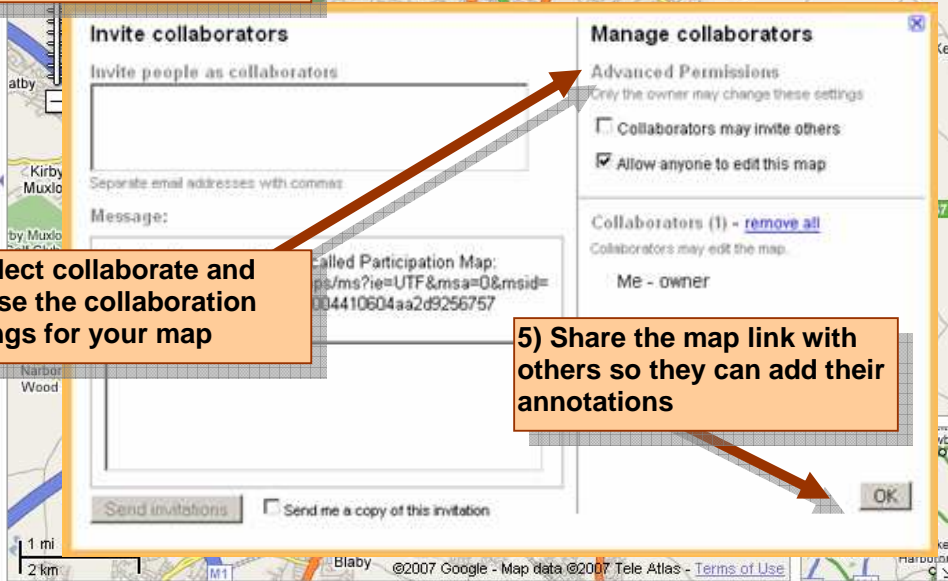
Collaborators may invite others

Allow anyone to edit this map

Collaborators (1) - [remove all](#)  
 Collaborators may edit the map.

Me - owner

#### 4) Select collaborate and choose the collaboration settings for your map



#### 5) Share the map link with others so they can add their annotations

#### 2) Give you map a title and description

